

Spiritual Innovation for a Changing World

201ST ANNUAL CONVENTION OF THE SWEDENBORGIAN CHURCH

Convention 2025 Accommodations – Explained!

There are a few important updates to accommodations this year as we prepare for the 201st Annual Convention of the Swedenborgian Church of North America.

What's New in 2025?

- Everyone, including teens, will stay in the hotel this year—no dorms at all.
- Teens (ages 13–18) only need to pay the registration fee of \$110. If a teen stays in a double room in the hotel with other Swedenborgian Church Youth League (SCYL) teens, their room and board will be fully covered thanks to generous donations. Parents are not required to stay with them—they'll be housed together as part of the supervised SCYL program.

This is a big shift from past years, when SCYL participants stayed in dormitories—this year, they'll enjoy the comfort of hotel accommodations alongside the rest of our community.

Hotel Details

We've blocked out a limited number of rooms at the University Place Hotel and Conference Center in Portland, Oregon, for the discounted rate of \$110 per night plus taxes and fees—\$25 less than last year's rate.

-Standard Double Room:

- \$110 (SCNA Room Block)

-Meal Package

-4 Days: \$325

-5 Days: \$415

-Registration Fee

-Adult/Teen: \$110

-Commuter: \$55

-Virtual Attendee: \$50

-Child 12 and Under: \$0

Each room (double or king) includes a mini fridge and access to hotel amenities like the pool and fitness center.

Important: You must book your room by calling the hotel directly at 503-221-0140 and mentioning you are with the Swedenborgian Church of North America. There is no online booking platform. More information: www.uplacehotel.com

Youth & Family Accommodations

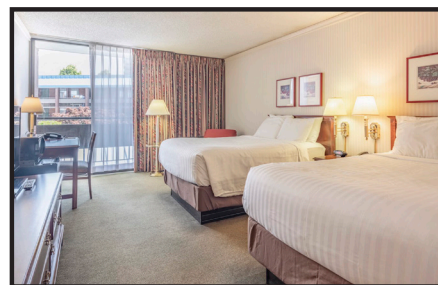
- Teens (13–18) staying in a double room with the SCYL group only need to pay the registration fee (room and board are free).
- Youth (0–12) staying with parents will have all meals fully covered and no registration fee.
- Families only pay per room, not per person—making this a great value for families.
- Children under 13 must stay in the same room as a parent or legal guardian.

Meals

This year, meals are fully catered by the hotel—a big upgrade from previous years, when meals were provided through dormitory cafeterias. The Meal Package includes:

- Hot breakfast each morning (except July 1, which includes continental breakfast provided by the hotel)
- Hot lunch
- Catered dinner
- Snacks and reception desserts and hors d'oeuvres

The cost for Lay Attendees is \$325 for the full meal package. You'll enjoy varied, high-quality meals in a relaxed setting—all conveniently located on-site. A catered banquet dinner with a



DJ will also be held the evening of June 30 to celebrate the end of Convention.

If you have dietary restrictions, please contact manager@swedenborg.org to ensure your needs are met.

Wellness & Recreation

Hotel guests receive exclusive access to Portland State University's Campus Recreation Center, just six blocks—or two MAX stops—from the hotel.

A \$15 day pass includes:

- Two-court gymnasium
- Indoor track (1/11 mile)
- Gym for floor hockey & indoor soccer
- Large cardio & weight room
- Group fitness studios
- Aquatic complex (lap pool & whirlpool spa)
- Bouldering wall
- Daily fitness classes
- Locker rooms

Registration Reminders

- In-person registration deadline: May 15 at 5:00 PM ET
- Room & board must be paid in full by May 15
- Virtual registration deadline: June 15 at 11:59 PM ET

Register & Learn more:

swedenborg.org

Questions? I'm here to help!

manager@swedenborg.org

857-217-3309

(M–F 10:00 AM–2:00 PM ET) ☎