

The Messenger

OFFICIAL ORGAN OF THE SWEDENBORGIAN CHURCH

MAY 1980

IN THIS ISSUE

The 1980s: Decade of Opportunity	Paul Zacharias	102
The Starting Line	Eric Zacharias	103
A Vision for General Convention	Calvin Turley	104
High - Lights: Helen Keller Celebration		105
Nominations for Convention '80		106
Mini - Courses at Convention '80		108
12 page Special Feature:		
“FOCUS ON KEMPER ROAD CENTER”		109
National Alliance Bulletin, Marion Priestnal, Editor		121
From Church Records		124
Special Announcements		126

Editorial:

THE 1980s: DECADE OF OPPORTUNITY

A recent article in the *Toronto Star* caught my eye. It began this way: "One of Canada's top Christian communicators says that the major problem facing the churches in the 1980s is to find new ways, new language, to express who Jesus is for modern man." So argues the Very Rev. Herbert O'Driscoll, dean of Christ Church Anglican Cathedral in Vancouver.

"For the first time since the fourth century we are being forced again to answer the question of how you express the profound mystery of Jesus being both human and divine. We simply have to find new forms and can't run away from this any longer."

What a glorious opportunity this presents for the New Church! An Anglican bishop is saying that what the churches — and Christians in general — need most of all right now is an intelligent, Scriptural, satisfying concept of the Lord. How could Jesus Christ be both God and Man? For about 1800 years scholars have been debating, sometimes fighting, over this basic question. Thousands of books have been written on this subject. For the growing Christian person nothing is more important. Ultimately every part of our Christian life and faith hangs on our concept of the Lord. This is central. And if this foundation is weak and uncertain, then our entire belief structure bends in the wind and is of little help to us.

We need to proclaim the clear New Church teaching revealing the nature of the Lord Jesus Christ. This is one of our primary missions. That the Lord Jesus Christ was and is fully God and fully Man. That Almighty God has shown Himself to us in the face of the Glorified Christ. That God is a Divine Person whom we can approach and know and love in the Transfigured Lord . . . in His Divine Humanity. That the One God who visited us in the person of Jesus Christ still walks beside us today. Can we tell this to the world in words that will catch fire in the hearts of people? Is this not a glorious challenge — and opportunity!

And this is only one facet of a many-splendored opportunity. People today are seeking for an authentic spiritual dimension to life. They don't want a lot of speculation or *vague theory* — they want to experience vital Truth and Love within themselves. Truth about the reality of the spiritual world. Truth about the meaning of their lives. Truth about human relationships and our relationship with the Lord.

This is what so many people today are talking about and desperately want to experience in their own lives. And the New Age teachings, properly presented, dispel the shadows. "Let your light so shine before the world . . ."

This is an age of seekers . . . the Wholistic concept of life is growing like wildfire . . . old intellectual and theological boundaries are crumbling . . . thousands of "light centers" are emerging all around the world . . . more people are recognizing that planet Earth is the garment of God and must be carefully nurtured. What a grand time to be alive!

What a wonderful opportunity for the New Church in the 1980s and beyond.

If we are awake to it.

P.Z.

A CORRECTION

ANNUAL MEETING OF N.C.T.S. CORPORATION

The ANNUAL MEETING of the Corporation of the New Church Theological School to elect officers and to transact such other business as may properly come before it will be held at WELLESLEY COLLEGE, Wellesley, Mass., on Friday, June 27, 1980 at 7:30 p.m. This notice serves as an official call to that meeting.

Harvey M. Johnson, Clerk
Corporation of the New
Church Theological School.

THE MESSENGER

MAY 1980

Vol. 200, No. 5 Whole Number 5042

Published monthly, except for the one double issue in July — August, by the Swedenborgian Church (founded 1817, incorporated 1861 as the General Convention of the New Jerusalem in the United States of America).

Paul B. Zacharias, Editor

The opinions of contributors do not necessarily reflect the views of the Editor or the Department of Publication, or represent the position of the church.

EDITORIAL, BUSINESS & SUBSCRIPTION ADDRESS:

THE MESSENGER

Box 2642, Stn. B

Kitchener, Ontario, N2H 6N2

Telephone — Office 519-743-3845

Home 519-744-6785

Deadline for material: 5th day of the month.

Subscription free to members of the Swedenborg Church: non-members, \$5.00 a year; foreign postage .25 extra; gift subscriptions from a member, \$3.00; single copies, .50.

The Starting Line ————— by Eric Zacharias

The 1980 convention theme, "The New Church in the New Decade", has been taking the course of the long distance runner through my mind. At times, like the runner, it disappears over the hill and around the bend — only to emerge again — but never coming completely to rest. These are uncertain times. Tim Timmons is the Director of Maximum Life Communications. In his book, *Maximum Living in a Pressure - Cooker World* he writes, "The world is passing us by so fast that it becomes nearly impossible for a person to get his/her head together long enough to consider: Why am I? Who am I? Where am I? . . . We are aboard a train which is gathering speed, racing down a track on which there are an unknown number of switches leading to unknown destinations. No single scientist is in the engine cab and there may be demons at the switches. Most of society is in the caboose looking backward. Everything is out of control. It's like having your feet firmly planted in midair."

Similar sentiments to the above quote are the focus of much that is being written today, heard on our street corners across this land and amplified in a variety of ways from pulpits on Sunday morning.

In an attempt to bring our convention theme into perspective, I began taking inventory of our resources. We have available to us God's Word, a revelation in the writings of Emanuel Swedenborg, and the genius of our people. Out of these we must draw the strength, the wisdom, the love and determination to become partners with the Lord in our response to the conditions and circumstances of our time. Even more — not only responding but hopefully providing leadership which will help plant the feet of society in the ground of solid principles.

Where and how, then, do we make our response as a New Church in this new decade? Is this the time to retrench? To severely cut back our programs? To return to the basics? To withdraw into a cocoon that marks a purely survival syndrome? To simply ride out the storm?

It seems hardly fitting of the grand design of the New Jerusalem that we should now be content to wall ourselves in — "to fight

another day." The words of the prophet Isaiah seem so appropriate for this moment. "Enlarge the place of thy tent, and let them stretch forth the curtains of thine habitations: spare not, lengthen thy cords, and strengthen thy stakes." The injunction here is to go deeper and at the same time to move out.

The General Council is cognizant of this changing world. Already underway is a critical evaluation of our resources. A request is in the hands of all key personnel that they initiate a review of our programs and activities. The suggested criteria for this review? I quote from a statement accepted by the Resources Committee. "We propose three pragmatic criteria, closely interrelated, for evaluation of Convention programs. Briefly, these are *growth, excellence, and unity.*"

Convention's Department of Education is very much at the center of the life of our Church. The March meeting held at Almont, Michigan gave ample demonstration of the awareness which this Board has of its role. Under the leadership of the Rev. Ronald Brugler a positive learning experience is being planned for all children who attend the 1980 convention with their parents. A variety of mini - courses ranging in nature from the theological to social issues will be offered. Regional institutes, training and learning opportunities will be initiated by this Board during the course of the year.

In its effort to relate to the people in the churches, the entire Board of Education joined with the Detroit congregation in the worship service on Sunday morning, March 16th. The Rev. David Rienstra, from Fryeburg, Maine, delivered the sermon. Following the service and dinner, the Board membership, in a panel format, met with the congregation for a time of sharing, and listening. We appreciate the warm welcome given us in Detroit.

Our convention theme opens the way for creativity in the preparations of our banners this year. This is an opportunity for every congregation to give visible expression to its aspirations for the New Church in the new decade. What would you like to have our Church be and become during the '80s?

A VISION FOR GENERAL CONVENTION

by Calvin Turley

And I saw the holy city, new Jerusalem, coming down out of heaven from God, prepared as a bride adorned for her husband; and I heard a great voice from the throne saying, "Behold, the dwelling of God is with people. He will dwell with them, and they shall be his people, and God himself will be with them . . ."

(Rev. 21:2, 3)

When I think of ministry, the church and religious experience, there is for me no more exciting vision than that of the Holy City, New Jerusalem descending out of heaven from God. At times I can thrill in response to the image and my body experiences a surge of energy that flows like a wave of grain from the top of my head to the ends of my toes and back again. And further, to personally participate in a fulfilment of the promise — to experience an ultimatum of the vision of God's personal presence as *with* you — to encounter the Divine Human experientially, not just theologically — that is nearly too much! Life overflows (Ps. 8) into an ecstasy of joy and wonderment beyond words. Transcendent truth becomes an awareness, at least for a time and a season, and one's world view is never the same again. There is in the whole image of the Holy City, New Jerusalem something so overwhelmingly experiential, holistic and personal that it is with some hesitation that I even seek to speak or write of it. Yet, from time to time, often at unexpected moments, the energy must of necessity spill over into sounds and words.

Reflecting on the vision and experience, one wonders, "What is that city like? What would it be like to live there? Would I recognize it if I saw it?" John saw it. We can listen to his report. With spiritual eyes he looked and from an inner vision he reported what he saw. "I saw no temple in the city . . ." (Strange. Wonder where the people gathered for worship on Sunday morning?) ". . . for the temple is the Lord God the Almighty and the Lamb?" (Wow! No wonder he didn't see any temple. He must be sensing a different kind of relationship. Perhaps the experiencing of God as actively present in one's own personal history day by day, moment by moment.) "And the city has no need of sun or moon to shine upon it . . ." (That's different. How does one see to get around?) ". . . for the glory of God is its light,

and its lamp is the Lamb." (Fantastic! Beautiful! But I wonder, how would one experience that light? As "out there" or as "in here?" I'm getting the sense that this is a very special kind of city.) "Its gates shall never be shut by day — and there shall be no night there . . ." (There is certainly something reassuring about that. Still . . .?)

Now I remember. John was "in the spirit." This is a spiritual experience, an interior knowing of transcendent truth, being shared in the pedantry of language. The words are being stretched, and sometimes overloaded, as inadequate vehicles of communication. The truth of the vision transcends the definitions of the words. This New Jerusalem is indeed ". . . a very special kind of city." Well, if a "city" isn't a "city", what is it? When is a "city" not a "city"? When it's a relationship! And if the city is the New Jerusalem, it's a new, more personal relationship with the Lord. That's it! The Holy City, New Jerusalem is a new era, a time of more personal experiencing of God as the Lord. We could certainly expect that relationships within the City would be characterized more by person - to - person encounter than by the formalities of propriety and custom; more open, free and spontaneous, I should think.

Swedenborg had his revelatory experience, too. What help do we find there? ". . . The tabernacle (dwelling place) of God is with men," he writes, "signifies the Lord from love speaking and declaring the glad tidings, that He Himself will now be present with men (people) in His Divine Human." (AR 882) As usual, Swedenborg's Latin translated into English comes out sounding heavy and heady. But take a minute.

Sit up straight. Take a deep breath and slowly blow it out. Feel your body relax and let your mind be quiet and centered. Before your closed eyes let an image arise in response to the Lord, from love, speaking to you and declaring the glad tidings that He Himself is present with you. . . . Can you sense the Lord standing beside you in the kitchen, or in the back yard, or at work lovingly sharing with you the experience of his presence? . . .

That's personal . . .

And it makes a difference.

Reflecting on your brief meditation, perhaps you sensed the relationship as reciprocal, as interpersonal, as a true dwelling with the Lord this moment of this day. “. . . To dwell,” writes Swedenborg (AR 883), “signifies conjunction from love . . .” And this experience, he insists, is something more than a sense of presence, it is an interpersonal relationship. “. . . Conjunction with the Lord is one thing, and His presence another; conjunction with the Lord is not given except to those who approach Him immediately . . .” (Ibid.)

It seems clear that the religious experience and life in the Holy City, New Jerusalem is characterized by very loving, open, and interpersonal kinds of relationships with the Lord — and with others. Perhaps Swedenborg’s distinction between experiencing the “presence of the Lord” and “conjunction with the Lord” is not very clear as an abstract idea, but it can become a vivid awareness as an experience.

How might this image of the Holy City, New Jerusalem become a vision for our General

Convention? How might it translate into our corporate life as a church body and into our personal lives as individual members of that body?

In short, we need to dream dreams. But before that, perhaps, we need to recapture our ability to dream dreams and to have visions. I don’t doubt the presence of the Lord with everyone of us. What seems more uncertain is our experiential knowing of conjunction with the Lord. However that may be, the exciting challenge and opportunity before us is to freely choose and to commit our energies to the seeking of the means, and the exploration of the methods, which will facilitate the experiential knowing of conjunction with the Lord. This I believe to be the validating purpose of our ministries, the reason - for - our - being as a church, and the desire of our Lord for our personal lives. It is “A Vision for General Convention” which I want to seek and share with you.

HIGH - LIGHTS: HELEN KELLER CENTENNIAL CELEBRATION

- Pulitzer prize winning author Joseph Lash has written a biography *Helen Keller and Teacher* that will be in bookstores in May or June.
- The United States government has issued a Centennial Memorial Postage Stamp of Helen Keller and Annie Sullivan that will be released in June.
- CBS is producing a half hour television documentary on Helen Keller’s religion that will be shown in late June.
- The Swedenborg Foundation is producing a 60 second public service television announcement, depicting a statement from Helen Keller’s *My Religion*, that will be sent to 400 T.V. stations in North America and abroad.
- The Massachusetts New Church Union and the Swedenborg Foundation are co-sponsoring an exhibition at the Helen Keller Centennial Congress to be held June 23-28 in Boston.
- Convention’s Department of Publications is producing a series of 30 and 60 second public service radio announcements, with readings from *My Religion* by Lillian Gish, Anne Baxter and Patty Duke Astin, that will be sent to 500 radio stations in North America.
- All Convention churches will be supplied with Helen Keller leaflets, posters, and other appropriate materials for local distribution.
- Helen Keller’s pamphlet, *How I Would Help the World*, has been reprinted and is available from the Wayfarers’ Chapel at 13 cents per copy.

What is your church doing to celebrate the 100th anniversary of Helen Keller’s birth? Share your story with other *Messenger* readers. Send us an account of your local Helen Keller Centennial activities.

Nominations For Election At Convention '80

PRESIDENT: Rev. Calvin Turley
Newton, Mass.

VICE PRESIDENT: Mr. Fred Perry
Nagog Woods, Mass.

SECRETARY: Mrs. W. (Ethel) Rice
Brockton, Mass.

TREASURER: Mr. August Ebel
Washington D.C.

GENERAL COUNCIL (4 - year terms)

Minister: Rev. George Dole
Sharon, Mass.

Lay Members: Mrs. Mary Crenshaw
Detroit, Mich.
Mr. Spencer Hallberg
Park Ridge, Ill.

S.S.R. BOARD OF MANAGERS

(3 3 - year terms)

Rev. Ronald Brugler
Portersville, Pa.

Rev. Jerome Poole
Wilmington, Del.

Rev. F. Robert Tafel
Washington D.C.

Respectfully submitted,
Randall Laakko (Mid - Atl.)
James Zehner (Ohio)
Pat Zacharias (Canada)
Cecile Werben (N.Y.)
Betsy Young (Pac. Coast)

BIOGRAPHIES

CALVIN E. TURLEY

President

My ministry to the Church began in 1952 and I have served in Portland, Oregon; Bellevue, Washington and on the Faculty of the Swedenborg School of Religion. It has been my privilege to serve the Church on numerous boards and committees over the years including General Council, the Executive Committee of the Council of Ministers, the Board of Missions and the Planning and Development Committee. I have given leadership in Stewardship and Benevolence for Convention, the Council of Churches of Portland, Oregon and the National Council of Churches. For five years I gave leadership to our Post Convention Conference and, with Marilyn, for five years co - led the Florida Conference for "Persons Who Have Lived Longer."

In 1969, after seventeen years in the ministry, I returned to the Claremont School of Theology from which I received the Doctor of Ministry degree in Pastoral Counseling in 1971. I am a Diplomate of the American Association of Pastoral Counselors, a Clinical Member of the American Association of Marriage and Family Therapists, a Professional Member of the Massachusetts Psychological Association, a licensed Psychologist (Massachusetts), and a licensed Marriage, Family and Child Counselor (California).

Most important to me, however, is my ordination into the Christian ministry in 1953. That remains my primary professional identity. If elected President of Convention, I will seek to bring a strong pastoral emphasis to that office, doing my best to enhance the spiritual well-being of both our professional clergy and our laity. The vision of the Holy City New Jerusalem is for me an exciting spiritual image. It will be my single purpose to nurture that image into a living and vital vision for our General Convention.

BOARD OF EDUCATION: (1 3 yr. term)

Ms. Ruth Martin
E. Stoneham, Maine

BOARD OF PUBLICATION: (1 4 - yr term)

Ms. Carole Lawson
Washington D.C.

BOARD OF MISSIONS: (2 3 - yr. terms)

Rev. William Woofenden
Sharon, Mass.

Mrs. Dorothy Farnham
DeLand, Florida

NOMINATING COMMITTEE:

(Two to be nominated, one to be elected for a five - year term.)

Rev. Richard Baxter
St. Paul, Minn.

Rev. Erwin Reddekopp
Kelowna, B.C.

AUGMENTATION FUND COMMITTEE:

(One 3 - year term)

Lt. Col. John Keller
Columbus, Ohio

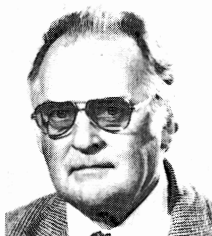
COMMITTEE ON ADMISSION INTO THE MINISTRY (2 1 - year terms)

Mrs. Mary Ebel
Washington D.C.

Rev. Ernest O. Martin
Palos Verdes, California

FREDERICK G. PERRY*Vice President*

After two years as Vice President, I am beginning to appreciate the hard working efforts of the various officers, boards and committees toward the goals of the church. I would like to continue to work with them, particularly in refining the goals and strategies of our programs in these changing and difficult times, and also during a time of transition from the President to the President - Elect.



Currently I am chairing the General Council Committee on Resources Utilization and the Board of Conciliation and Disciplinary Proceedings.

ETHEL RICE*Secretary*

A life-long Swedenborgian, and the wife of a New Church minister, I feel privileged to have made the Church a vital part of my life. Besides assisting in the work of the Cambridge Society, I am active in two women's groups in Brockton and in the Massachusetts New Church Women's Alliance. I have served as President of the Resource Group since its inception, an organization open to both men and women of the Cambridge Society, dedicated to the promotion and encouragement of ideas to enhance the work and influence of the Society.

Elected Recording Secretary in 1968, I am completing my twelfth one - year term.

AUGUST A. EBEL*Treasurer*

Incumbant treasurer completing sixth one - year term.

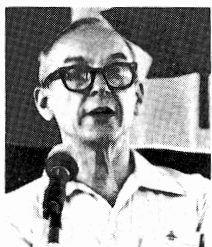
Retired from U.S. Navy with rank of Captain.

Member of Washington Society.

Treasurer of Swedenborg School of Religion.

Member of Board of Trustees of Urbana College.

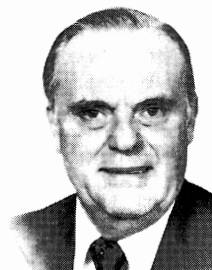
Age 59 and in good health.

**MARY CRENSHAW***General Council*

Born in Chatanooga, Tennessee in 1927. I have two daughters, Renee Gardner and Terrie Lynn. Terrie will graduate from Bryn Mawr College this summer. I am employed by Detroit Public Schools as a Social Worker at Detroit Day School for the Deaf. I have a Masters Degree in Social Work. Presently I am President of the Board of Trustees, Detroit Hearing and Speech Clinic, and currently I am President of the Detroit New Church Society.

**SPENCER HALLBERG***General Council*

Born in Greenwich, Connecticut in 1912 of Swedish parentage. Graduated from Texas Christian University in 1935 with a BBA degree. Served in the army for three years in W.W. II. Worked for Amoco Oil Company in Chicago from 1946 to 1977, latterly as Manager of Transportation and Scheduling. Since 1977 I have been self-employed as a consultant to the oil industry and as an oil broker.



I have been a member of the Good Shepherd (Sweden - borgan) Community Church in Park Ridge, Illinois for the past seventeen years. Presently I am President of the Board of Trustees, and am serving a second term as Treasurer of the Illinois Association.

WILLIAM WOOFENDEN*Board of Missions*

Lifelong member of Convention. Ordained in 1953. Have served Convention churches in New York City, Detroit, Chicago (Park Ridge), St. Louis, and am currently pastor at Bridgewater. Faculty member of SSR. Have served on Board of Publication, General Council, and am currently on executive committee, Council of Ministers, chaplain for ANCL and by virtue of that office an invited member of Department of Education.

**DOROTHY B. FARNHAM***Board of Missions*

Born in Bath, Maine in 1916 to the Rev. and Mrs. Gould Brown. Graduated from Brockton High School and Burdett Business College in Boston. Married Alan Farnham in 1937; have two children and three grandchildren.

During my lifetime I have served Convention at all levels — local, association and national. For the past two years I have been President of the Alliance of New Church Women. I have also served as Secretary of the Sunday School Association, on Convention's Nominating Committee, and for a number of years as Secretary of the Board of Missions. I am actively involved in the DeLand Church and in the S.E. Association.

I feel that my secretarial training and my long - time interest in the work of the Board of Missions qualify me for further service in this capacity.

ERWIN D. REDDEKOPP*Nominating Committee*

Life time member of General Convention.

Ordained 1953 — General Convention.

Served Board of Missions in Western Canada for fifteen years.

Pastor of the Detroit Society for seven years and of the San Francisco Society for nine years.

Presently Visiting Pastor for the Board of Missions and the Western Canada Conference. Living in Kelowna, B.C.

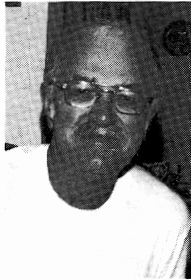
Service to Convention:

Seven years as Secretary of the Council of Ministers.

Served two terms on General Council.

Served one term on Board of Managers of SSR.

Presently serving on Augmentation Fund Committee.

**JOHN KELLER***General Council*

I attended Urbana Jr. College in 1941 - 43. Following service in the Army Air Corps, returned to U.J.C., graduating with A.A. degree in 1947. Received B.Sc. from O.S.U. in 1949. Taught for eight years, then returned for Air Force duty, retiring with total of 26 years military service. Presently teaching physics in Columbus, Ohio. Joined the Urbana New Church in 1941, serving as an officer of the Society several times. Have been a member of the Urbana College Bd. of Trustees for 8 years.

MARY CALBY EBEL*Committee on Admission into the Ministry*

Life-long member of the Swedenborgian Church.

During the last 24 years a member of the Washington D.C., Church, active on various committees, including a number of terms on the governing body of the society.

Participated as a delegate to Convention over the past 10 years.

Married — 2 children.

Personally committed to the elimination of artificial barriers of freedom of choice by women and men in our society. Actively supports the Equal Rights Amendment of the Constitution.

The future growth and development of the New Church and of Convention are important to me. With my background and convictions I can serve them effectively as a member of the C.A.M.

ERNEST O. MARTIN*The Committee on Admission to the Ministry*

I have served in the ministry of the Swedenborgian Church for 26 years including pastorates in Wilmington, Delaware, and Washington, D.C., the presidency of Convention, and presently as an associate minister at the Wayfarers' Chapel. I have a special interest in our theological school and served for several years as chairman of the Board of Managers. It is especially important that we



maintain high standards for our ministry, and I would like to work with students from the time of their admission to the school until their graduation and ordination to help prepare them for a ministry that is challenging to them and provides strong leadership for our church.

REV. F. ROBERT TAFEL*Board of Managers of S.S.R.*

I offer a background of experience in various forms of ministry spanning a period of fifteen years. Such experience could be useful in serving on a Board guiding the preparation of individuals for ministry.

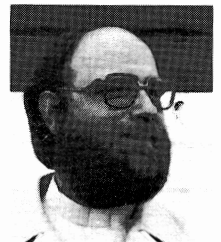
Ordained in 1964, my first experience was gained in a parish ministry at San Diego. Five years later, I served on an experimental team ministry at Kemper Road Center in an "ex-urban" community exploring and implementing new ministries. Then, on a "work-sabbatical" from ministry I trained and worked first as a driving instructor and then as a restaurant manager. These experiences ultimately helped me to become recommitted to my life's work: the Christian ministry. I presently serve as pastor of the Washington Society at the National Swedenborgian Church in Washington, D.C. Here, in an urban setting, a marriage and family ministry known as "The Wedding Chapel" is being integrated into the life of a parish ministry.

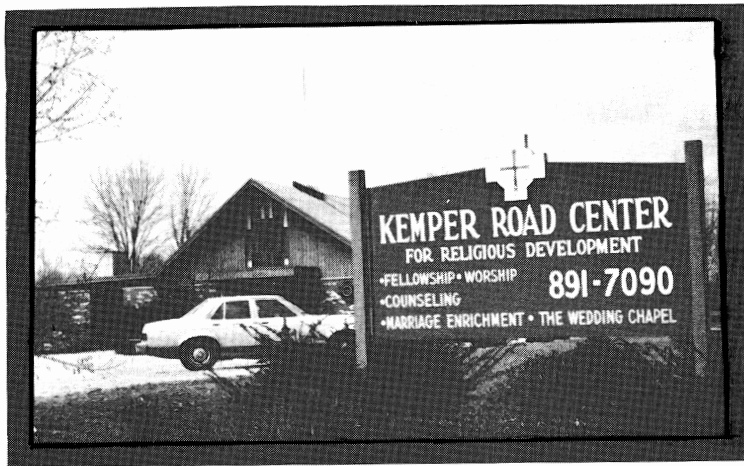
I believe that variety produces richness and completeness. I wish to bring my experience and concerns to a Board where they can contribute to the development of ministry.

**RONALD BRUGLER***SSR Board of Managers*

Ten years ago while attending Urbana College I discovered the teachings of the New Church and began my relationship with Convention. This relationship has seen me through four years at Urbana, four years at the Swedenborg School of Religion, and so far two years in our ministry. I serve the Pittsburgh - Cleveland Joint Ministry and the Board of Education as Religious Education Resource Person. I am also superintendent of the Almont New Church Assembly, and one of our representatives to the Governing Board of the National Council of Churches of Christ.

Consequently, I speak from my own experiences when I say that we have an educational arm of the church of which we can be proud. Be it a class in a Sunday School, Urbana College, a church camp, or the Swedenborg School of Religion, there is the opportunity for utilizing our church's unique potential. In accepting the nomination for the Board of Managers I realize this and feel that I can bring to the position both the experiences of a recent student, and a deep appreciation of the professional skills that the faculty seeks to promote.






Kemper Road Center believes that religion should touch our lives at all points, challenging us to raise our present experience to spiritual heights by transmitting our religious insights into the living tissue of permanent Christian character.

Potent Christianity is strengthened by the direct relationship that flows from the Lord to the individual and back again. There is no age limit on a religious spirit.

Real worship consists of putting into action in our daily lives the Christian principles of faith which we profess. Each individual is precious in the sight of the Lord. And, as such, the individual is important and precious to Kemper Road Center.

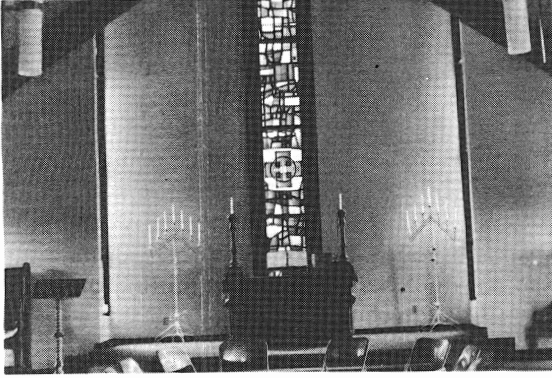
We believe that in the framework of a nurturing Christian fellowship, an individual may grow into the fullness for which one was created. Kemper Road Center is a fellowship of people dedicated to the process of their own spiritual growth.



We welcome you to Kemper Road Center and invite you to participate in your own growth process. We extend to you our fellowship and supportive community.

We share with all who are seeking a deeper inner life our conviction that there is an integral relationship and harmony between the beauty of God's natural world and the inner world of our spirit and personality.

Swedenborgian Minority Intellect



Minorities frequently operate from the "we would if we could but we can't so we won't" syndrome. This is readily apparent in the Swedenborgian Church. We tend to dismiss things out of hand because of our smallness or because of our own diverse needs. But precisely because of these two things we have *unlimited* possibilities and challenges.

Kemper Road Center for Religious Development, the Swedenborgian Church in the greater Cincinnati area, sees increasing areas of service, reasons for optimism and ever-widening circles of Swedenborgian influence and impact.

In this special edition of *The Messenger*, we share with you our vision and hope for our heritage. We open the doors of Kemper Road Center and invite you to share in our life. In doing so, we remind you that this is only one approach, one way, one outlook for actualizing our faith.

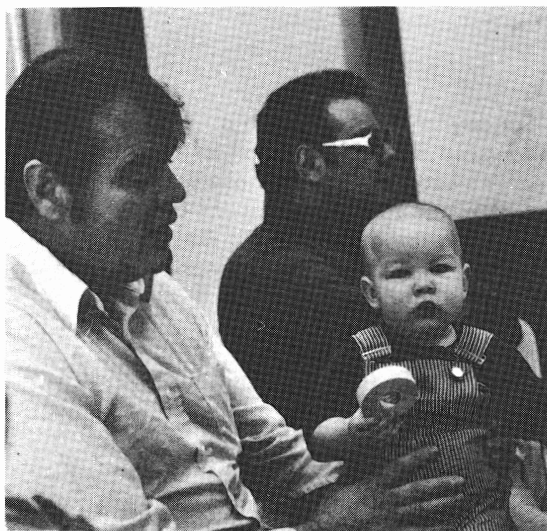


However, we strongly feel and believe that each of our sister churches has the same potential, similar resources available and a sufficient core group to effectively counteract the *minority intellect*. Kemper Road Center shares with you our struggle, search, mission and journey in the hope that you may see the enthusiasm, energy, effort and results that are possible for your own congregation.

Figures Are Deceiving

What's the membership of Kemper Road Centre? That's a good question! It all depends on whom you ask and on what you mean by membership.

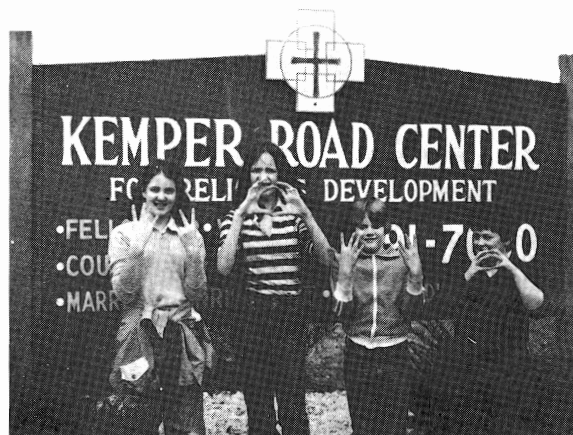
Many people in the Cincinnati area have heard of Kemper Road Center. Frequently their idea of our membership is somewhere between 500 - 1000. The reality is that our paid per capita membership is 34. Some of these are infirm and/or out - of - town. The core group is about 12.



However, if you mean by membership those helping to financially support the Center, the number would be significantly higher. If you mean by membership those actively participating in our programs, then the number would be quite large.

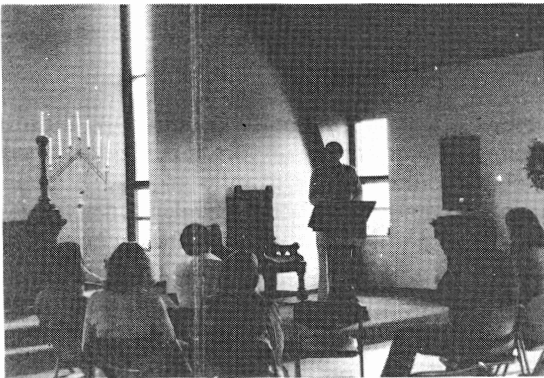


Thus, figures are deceiving! What is important for Kemper Road Center's purpose is the fact that we have developed ongoing programs that are meeting the needs of people from the community, and that we are able to do this with just a handful of people. What is important for our sister churches is the knowledge that they can do it, too!



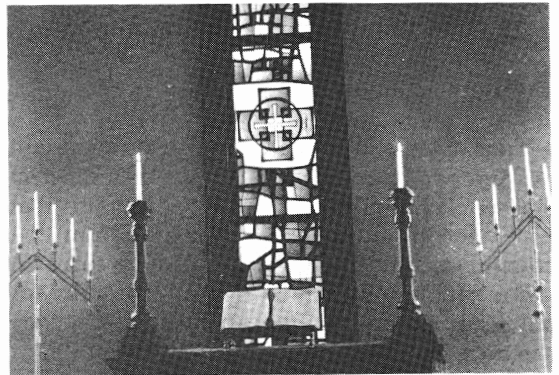
Sunday Morning Programming

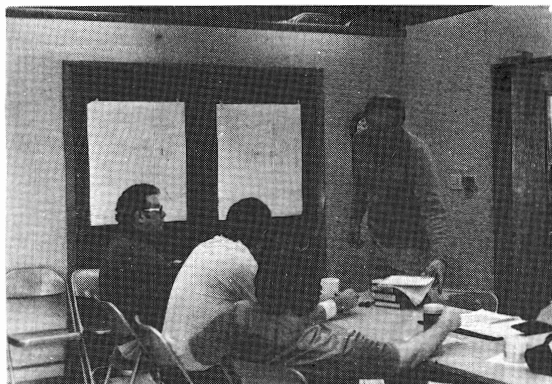
Sunday morning worship, education and fellowship lie at the heart of Kemper Road Center's programming. Those attending do so out of a desire to be present as opposed to some mythological ought. Because of this approach, intensity and receptivity are very much in evidence.



Our worship experiences vary — formal worship one week, guided meditation the next, family worship (including all ages of children) another week, dialogue participation another week. Worshipers at Kemper Road Center are very much involved in the whole process of their spiritual growth.

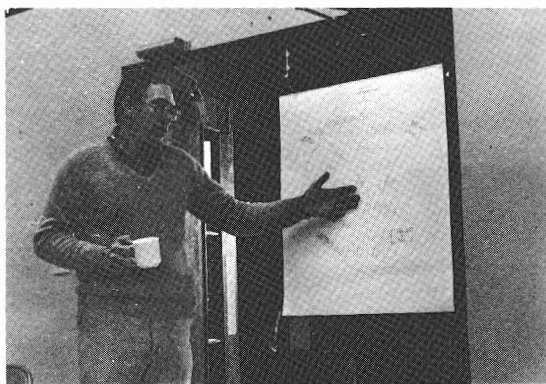
Our lovely sanctuary with handcarved candle sticks, baptismal font, altar and pulpit are symbols of continuity. These beautiful pieces of furniture were saved from our old church building. They blend in nicely with our new building while reminding us of our past heritage and journey.





The pastor's class on Swedenborgian concepts is using as a guide Bob Kirven's *Correspondence Course*. At present we are investigating the psychic structure of man.

Using Freud's model of the *id* and Jung's model of the *collective unconscious* as stepping stones, we are presently immersed in Swedenborg's *anima* and *animus*. As we understand more of *who* we are and *why* and *how* we operate, we gain the freedom to make new choices and new growth.



The young people have their learning time, too. Here we see the fruits of their archeological dig. Fossils tell of prehistoric time and reflect the wonder of God's creation. "And God saw everything that He had made, and behold, it was very good."



Our new music director is practicing on the piano instead of our lovely pipe organ. We are trying to sell our pipe organ to make room for needed classroom expansion.



Kemper Road Center offers monthly workshops for *all* children ages 4 to 10. We feel one of the significant benefits of this approach is the opportunity to take an idea, or theme, and carry it through to completion in the 4 - hour time period. Since each workshop is separate, children are free to attend as many or as few as they wish without that *lost feeling* when they've missed one.

The themes chosen are flexible enough to allow us to adapt crafts and games to them as well as to explore some portion of our philosophy in the story and discussion period. The popularity of the Saturday Children's Workshops has spread so that now pre-registration is necessary and a limit set at 50 children — last month (March) some had to be turned away.





Our Day Camp program is for 4 — 8 year olds. It is held right at Kemper Road Center on our five and one - half acre site. There are woods and a creek to explore, rolling meadows to run through, a recently built cabin in the woods “classroom,” and playground equipment for fun and exercise.

Our program includes nature lore, story - time with magic, crafts, games, sharing, singing and snacks.





Workshops and all - day symposiums, investigating those areas of conflict and mystery which impinge on our freedoms, help us in our ongoing process of spiritual growth.

These pictures, taken of our just completed all - day Anger Symposium, show some of the leaders, small group interactions and some of the large crowds.

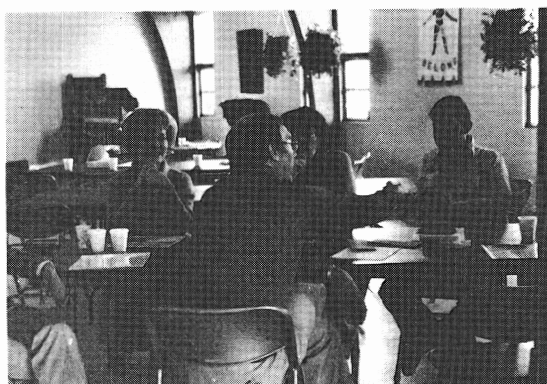




Sixty - one people attended this symposium. Eighty per cent were non - Kemper Road Center people. We had one outside presenter, Rev. Dick Donnenwirth, head of pastoral care and counseling at Bethesda Hospital in Cincinnati. However, we really do not count him as an outsider as he has done other workshops for us in the past.

The rest of the staff were KRC people: Dr. Edward Hackett, area psychiatrist in private practice with a special interest in group therapy; Rev. Dick Tafel, our minister, with a special interest in communication; Ms. Carole Stanford, KRC staff member with special interests in women's issues.

We utilized the skills of three other KRC people as well. Linda Tafel did the menu planning, food purchasing, food preparation and serving. Gloria Toot and Marge Antstenis served as small group facilitators. Both women have co - led groups with Dick at the Center. Two other people should also be mentioned: Marvin and Susan Wood who worked behind the scenes as clean - up person and food - server, respectively.



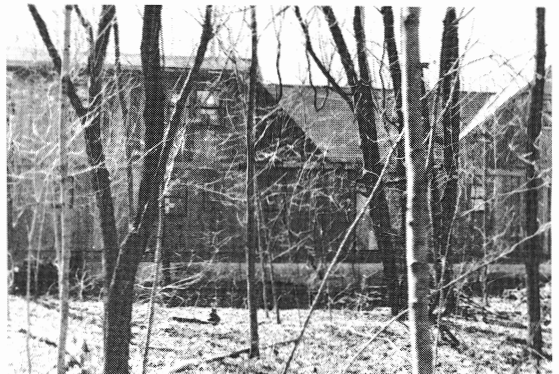
We Would Be Building

Kemper Road Center's nearly completed camp and retreat center, *Beside - The - Point*, is the result of a dream turned into reality by a lot of hard work. This facility, all housed in one building, will accomodate 50 campers as well as staff. It is suitable for one or more families for vacation use or for 7 or 8 couples for weekend retreats and growth experiences.

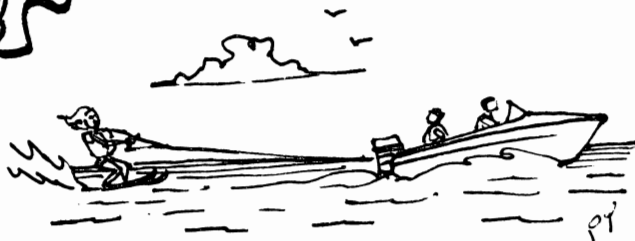


The structure was completely built by KRC hands and those of friends. What makes this so exciting as we look towards the June 8th dedication is that everyone said it couldn't be done — not enough money — not enough help — not enough experience. But, they did not count on the determination of Sweden - borgians.

When completed, this camp retreat center will become an integral part of the church's overall program. Located 60 miles from the church, it is within easy driving distance of Cincinnati. Plans are already underway to develop this into a retreat facility for other churches to rent.



Summer Camp



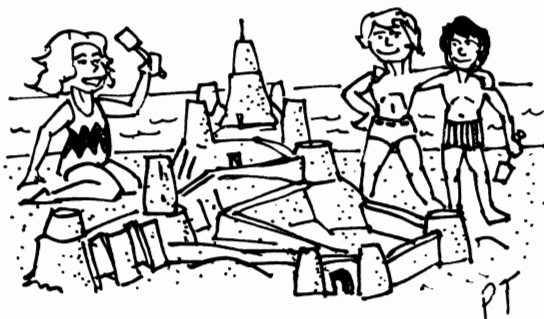
Our overnight camping program is held at *Beside - The - Point* at Rocky Fork Lake. The multi - purpose building houses the boys' and girls' dorms, kitchen, dining room, recreation room, staff rooms and restroom facilities.

The camp setting is secluded and beautiful, sitting on a point of land jutting out into the lake. There is plenty of elbow room for hiking and exploring as well as space for our outdoor theater and campfire ring.

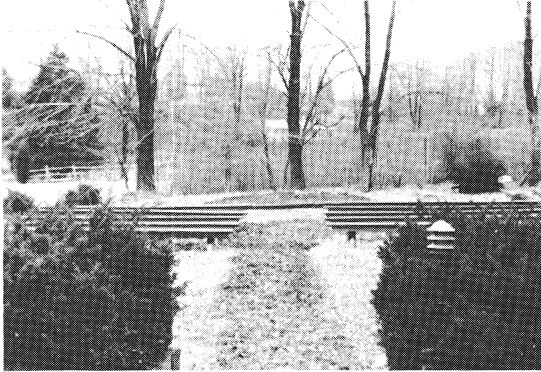


Our daily schedule includes swimming, discussion groups, water skiing, campfires, fishing, sailing, hiking, nature lore and sharing times. Each camper and staff member is expected to do his / her share of camp chores.

The camp staff has been carefully chosen to blend the qualities of empathy, openness and listening with those of teaching, leading and modeling.



WEDDING CHAPEL MINISTRY

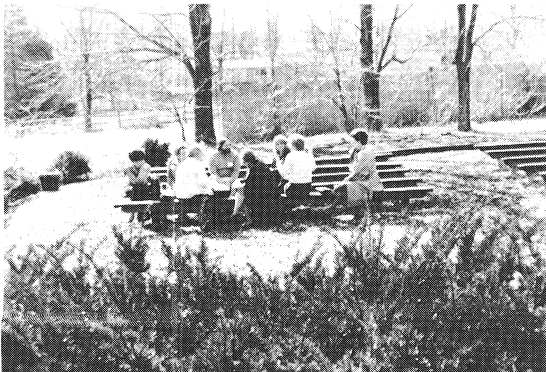


The outdoor chapel looks desolate, undressed for winter. However, very soon it will be a beehive of activity. The natural beauty of this chapel and grounds attracts many couples who want to celebrate their union in marriage. Located in a grove of trees and surrounded by shrubs and bushes, this chapel has no roof or walls.

The waterfall and pools, located behind the hill (just behind the wedding chapel sign and our wedding coordinator, Carole) set the mood for a sense of oneness with God and nature.



The marriage license and ceremony do not make a marriage. Rather, the trust, respect, openness and caring that are shared and developed make a relationship what it is and can be.



Marriage can open the door to a new unity whereby your own individuality and uniqueness may grow into a new fullness. This emerges as each of you brings from your own background and experience all that you are and blend this into what you are to become together.



Marion Priestnal, Editor

GREETINGS TO ALL THE ALLIANCE MEMBERS!

Greetings to all the Alliance members!

Our Editor has said that "the time has come for some words of wisdom from the President of the Alliance."

Whether or not these qualify as words of wisdom is a question, but here goes!

Convention, as most of you know, will be held on the campus of Wellesley College outside of Boston, Massachusetts, in late June. This is a most attractive place and handy to the historical and cultural attractions of the Boston area.

The Alliance meeting will be held in connection with the Alliance luncheon on Saturday, June 28, approximately at noon — it may be 12:30 or 1 p.m. — the program is not final as yet. The afternoon is free for sightseeing so we will not be rushed to finish by any stated time.

At this time we will hold our Annual Meeting, elect officers, and hear reports of what has occurred during the past year. The speaker for the day has not been chosen at this time, but I have requested the Massachusetts Alliance to discuss this matter, and to let me know if they know of anyone who is particularly qualified.

I wonder how much thought any of our Alliance members have given to the problems of energy conservation, and conservation of natural resources in general. This is a particular interest of mine, and there is quite a lot we can do individually to help — from recycling aluminum pans and cans, car-pooling, conserving electricity and water at home to supporting efforts to devise alternative energy sources. All of us can at least strive to be informed on the subject.

I look forward to meeting many of you in Wellesley in June.

Dorothy B. Farnham, President

FROM WESTERN CANADA

Lisa Reddekopp has written an extremely interesting account of her new life in Kelowna, British Columbia. In a note to the editor she adds:

"Our son, now in Dubar with his family, bought this duplex house and we live in one side . . . We have several friends here, as it seems to be a winter retreat from the cold prairie winters. Snow comes and goes rather quickly, though it stays in the mountains which we can see from our dining room window. This is where I watch the geese, and in the spring across the road there will be a cherry orchard in blossom."

Each day I can watch the flocks of wild geese fly past our house, from their feeding grounds. It is always with a sense of awe and amazement! I see them rise in an unorganized fashion, and after scoldings and admonishings, the laggards usually form their special pattern and head towards the Okanagan open lake, to get on with the business of a daily dip.

The city of Kelowna, which roughly interpreted means "Grizzly Bear" is in a beautiful fruit valley, a chain of lakes runs through its length. Since the summer weather is idyllic, tourists dominate the scene. There is excellent fishing, camping, swimming and boating, — but come the wintertime, it belongs again to the citizens, and their lives are quite normal. Curling, bowling, live plays and snowfests for entertainment — a fine Junior college gives Adult Courses in Arts and Crafts; lectures and workshops of general interest and concerns, so we in no way miss out on culture or activities. Indeed, essentially the life style and industry is not much different from that to which we have become accustomed.

Snowfest and Gymkhana have become new words in our vocabulary! Skidoos glide through the snow and travel the iced lakes. These are a common sight . . . and there are others who ski in the immediate area! Celcius has taken over for Farenheit and kilometers for miles.

It is here, Erwin and I decided to call home with about 60,000 other folks!

It is not too often anyone has the privilege or opportunity, after 32 years, of retracing one's steps and starting over again. We did!

Leaving Cambridge and the theological school in 1948, we moved to Winnipeg, Manitoba, the most eastern of the four Prairie Provinces, and from there as headquarters, branched out to four other church societies, namely Roblin, Boggy Creek and Flin Flon in Manitoba, and Yorkton, Saskatchewan to the west.

In 1950 we moved to Yorkton, still under the Board of Missions, serving the same group but adding Broadview, Sask.

Two years later, we moved still further west, and we called Edmonton, Alberta our home for eleven years. There, with the help of stalwart and dedicated parishoners and friends, the first New Church camp was established at Paulhaven. It was a tremendous undertaking and accomplishment. On several occasions, visits were made to Calgary, as well as Meadow Lake, Sask.

The next 16 years of our lives were spent serving the Detroit and San Francisco Societies, and now we have arrived back in Canada, 1059 miles north of San Francisco! Under the auspices of the Western Canada Conference (equivalent to an Association) and the Mission Board, Erwin is the visiting pastor, calling on many of the same people — but traveling eastward this time! It is a paradox living in Western Canada; how quickly one feels isolated from the larger church (Convention) yet, how at home we are with the folks we have known in the past!

Not ever having experienced the grandeur of the Canadian Mountains in autumn — the beauty of the snowcaps, the green backdrop of the pines and fir, and the brilliant yellows, bronzes and reds at every turn is absolutely breathtaking in the cool crisp morning air.

The first swing across the province (our trailer in tow) included stop-overs at Paulhaven — now well established and developed with a lodge, cottages and facilities for young and old for learning and relaxation; on to Meadow Lake, Sask., Roblin, Man., Winnipeg, back, Rosthern to North Battleford, Calgary, Alta., Creston, B.C. and back to Kelowna. Later on a trip was made to the Vancouver Society.

I compiled a list of names of all the children and young people (not having an organized Sunday School) and supplied them with lesson materials from our A.N.C.S.S., diligently collated and mailed by the Fryeburg pastor and helpers. We sorted them over again and mailed them to individual families. The young people's names and addresses of League age were given to the National president of the League, and they are now on the mailing list for the *Clear Blue Sky*.

The hospitality of the groups visited is genuine and warm. The territory is extremely extensive, actually from the Pacific coast to Winnipeg would be approximately 1800 miles, though I believe the terminology of "Mission Field" no longer applies to the place or people.

Schoolhouses and Churches used for services in the past years have taken on a new look — refurbished and painted. Homes are also used, with portable altar and appointments giving a "We Care" appearance. An organ buff would have a field day playing the variety of new and antique reed organs — very playable with ornate wood carvings. Almost all the former locations are still the same. Some of the older generation have gone to the higher life, while some have relocated in this world! Babies baptized 30 years ago are now Moms and Dads!

We have found in general that the New Church people here are much more concerned with the teachings of the church, explained and expressed as they apply to daily living, rather than with liturgy and forms.

In the Okanagan Valley (meeting of the waters), home meetings are held monthly, and some devoted members drive 85 miles one way to attend morning worship. A dinner always follows, as well as discussion and a social time. Religious discussions are lively and varied. One cannot help but be stimulated after such a session, and the enthusiasm is catching.

Edmonton has three dedicated lay ministers and Rosthern and North Battleford have a strong lay leader; the minister from St. Paul now comes to Winnipeg a few times a year and Vancouver has a layman leading the group. The zeal and loyalty of these leaders is to be admired as they hold the groups together.

Erwin will try to make three trips a year across the country. He does concentrate on the Okanagan group and Calgary since travel time, cost and weather are not too complicated.

While we miss our many friends and acquaintances south of the border, we have been warmly welcomed back to the land of our birth. As the wild geese fly back in their V formation, we feel good about where we are and what we are doing!

Lisa Reddekopp



ALLIANCE STUDY COURSE

TAKING THE LOWEST SEATS

Luke 14:7-11; Mitchell 377-386; Sower V 311-312; Clowes Luke 292-293.

The Lord often told parables about things near at hand; he was at a dinner, and that meal became a parable. The only reference in our church teachings to this parable about taking seats at dinner is AC 6393, which points out that those who desire a reward for what they do are indignant if they do not receive a greater reward than others; they place happiness in external things, that they may be exalted and have dominion. Such people even want to be chiefs in heaven, not knowing that heavenly happiness consists in being willing to serve others, and to be the least, not the greatest.

INVITING GUESTS TO THE FEAST

Luke 14:2-14; Sower V 312; Clowes Luke 293-295.

AC 2371 (4) says that a dinner, supper or feast denotes the good of charity, and the Lord's dwelling place with man is in charity. This parable shows that recompense is in the good itself.

MAKING EXCUSES

Luke 14:16-24; Mitchell 387-399; Sower V 312; Clowes Luke 295-297.

AE 252 (2) says that by the supper is meant the church and heaven; those invited but who excused themselves were the Jews, rich because they had the Word. The poor, maimed, blind and halt were those outside of the church, the Gentiles. AC 2336 (4) explains that these were in a life of good, and these Gentiles might be informed about the Lord's kingdom. AE 223 (22) says that a city denotes doctrines, and streets and lanes, the truth of doctrine. So the instruction means to inquire for those who receive the truths of doctrine. The Sower explains the three excuses given, as a successively stronger grip by natural and evil things; these make it more and more difficult, and finally impossible to leave them. "I have bought a piece of ground" well describes a youthful interest in opportunities of the world, which may keep one from an interest in spiritual things. The oxen represent affections for heaven. The marriage which makes it impossible to come is the union of falsity and evil confirmed in an evil life.

Alice Van Boven

FROM CHURCH RECORDS

BAPTISMS

PORTER — May, Angela and Amy Porter were baptized into the Christian faith in Bridgeton, Mo., on March 2, 1980, the Rev. Gudmund Boolsen officiating.

WIENS — Sabrina Jeanne, born August 12, 1979, daughter of Mr. and Mrs. Howard Wiens, was baptized into the Christian faith at Summerland, B.C., the Rev. Erwin D. Reddekopp officiating.

CONFIRMATIONS

CLEMENTS — FREESTONE — GREENE — HANLEY — HUDZIETZ — Jennifer Griffith Clements, Gary George Freestone, David Richard Greene, Daniel Allen Hanley, and Joan May Hudzietz were confirmed into Church membership at the Church of the New Jerusalem, San Francisco, California, the Rev. Edwin G. Capon officiating.

BAKER — HECK — HUBBARD — LASSO — McINTOSH — RAE — SCHNEIDER — TRACEY — TROTT — VAN WAGNER — WILLIAMS — Cheryl Baker, Sandra Heck, Lou and Joyce Hubbard, Christopher Lasso, John McIntosh, Melanie Rae, Carolyn Schneider, Donna Tracey, Harold and Kay Trott, Lynn Van Wagner, Debbie Williams, and Lynn Williams were received into Church membership by confirmation and transfer at the Church of the Good Shepherd, Kitchener, Ontario on Easter Sunday, April 6, 1980, the Rev. Paul Zacharias officiating. Cheryl Baker and Donna Tracey were also baptized into the Christian faith during this service.

MARRIAGES

BARTLETT — SHACKFORD — Ralph Lindon Bartlett and Wanda Lee Shackford were married in the Fryeburg New Church on March 22, 1980, the Rev. David L. Rienstra officiating.

CAMPBELL — LOEWEN — Alexander Robert Scott Campbell and Myrna Lynn Loewen were married in Calgary, Alberta, on March 8, 1980. The great - uncle of the bride, the Rev. Erwin D. Reddekopp officiating, assisted by the Rev. Ernest Bishop.

GAGNON — STEWART — Michael Thomas Gagnon and Christel Ann Stewart were married in the Fryeburg New Church on March 22, 1980, the Rev. David L. Rienstra officiating.

HUTCHINS — EMERY — Ralph E. Hutchins and Mary A. Emery were married in the Fryeburg New Church on March 1, 1980, the Rev. David L. Rienstra officiating.

SMITH — TOEWS — Dail Eugene Smith and Sandra Ruth Toews of Creston, B.C., were married on January 19, 1980, the Rev. Erwin D. Reddekopp officiating.

SWAN — BENOIT — Richard E. Swan and Sharon (Lemee) Benoit were married on March 8, 1980, in Bridgewater New Jerusalem Church, the Rev. William R. Woofenden officiating.

TOBISCH — SPILKER — Othmar Tobisch, son of the late Rev. Othmar Tobisch and Mrs. Margit Tobisch, and Kathryn Spilker were married on February 1, 1980, at the home of her daughter, Ilona, in Los Gatos, the Rev. Andre Diaconoff officiating.

DEATHS

BUCK — Mrs. Evelyn F. Buck passed into the spiritual world on February 6, 1980. A memorial service was held in Honolulu, Hawaii on February 10, 1980.

ENS — Mrs. Abram (Maria) Ens, 96, of Waldheim, Saskatchewan died in Rosthern, Sask., on March 23rd, 1980. The resurrection service was held in Waldheim on March 26th, the Rev. Henry Reddekopp officiating.

MINI - COURSES AT CONVENTION '80 WELLESLEY COLLEGE

- ✕1. Prayer/meditation/healing — Congregational renewal through support and commitment. Bob Kirven, Dorothea Harvey
2. ERA Panel — Sue Turley Moore and others
- ✕3. Growing Old in the New Decade — Elizabeth Johnson
- ✕4. Opening Our Spiritual Eyes — David Johnson
5. "Her - story" a do-it-ourselves approach to the history of New Church women — Alice Skinner, Roger Paulson
- ✕6. Key Ideas in Swedenborg for the New Decade — George Dole, Bill Woofenden
- ✕7. LOVE: the largest experience in life — Pat and Paul Zacharias
- ✕8. Convention in the New Decade — Cal Turley
9. Helen Keller: Her Faith, Her Life, and Her Influence — Clayton Priestnal, Gabriel Echols.

REGISTRATION FORMS FOR CONVENTION IN WELLESLEY THIS SUMMER SHOULD BE MAILED BY JUNE 1st.

MID - ATLANTIC ASSOCIATION RETREAT

Theme: Individual spiritual growth and healing.

Leaders: Dorothea Harvey, Mary Kay Klein, Randall Laakko and Carl Yenetchi.

Dates: May 16th—18th.

Place: Mercy National Center in Potomac, Maryland; just north of Washington D.C.

Cost: \$50.00 per person, which includes two nights lodging and six meals.

To register write to: MAA Retreat
Church of the Holy City
1611 16th St. N.W.
Washington D.C. 20009

(Cont'd from page 108)

RUTH MARTIN *Board of Education*

I have a strong interest in becoming a member of the Board of Education. I have worked for the Board of Education for approximately five years, developing and leading youth and adult workshops and Retreats (including WEYS and SNAP).

I feel that my training as a psychologist and my job experience organizing programs for children and adults have given me knowledge and experience that can be a useful contribution to the Board of Education. Our Church, present and future, means a lot to me. I feel that the Church has given a great deal to me and enriched my life. I would like to return this service through participation on the Board of Education.

ADVANCE CONVENTION REGISTRATION

Wellesley College, Wellesley, Mass.

June 25 - June 29, 1980

Name: _____

No. & Street: _____

City—State: _____, _____ Zip: _____

Accompanied by: Names	Relationship	Age of Children Attending
_____	_____	_____
_____	_____	_____

Boston Pops tickets wanted _____ at \$9.50 each. Total \$ _____

Mode of transportation _____

Arrival _____ (Date & Time) Departure _____ (Date & Time)

Please give date and time of arrival in Boston as well as mode of transportation, so we may anticipate your arrival time at Tower Court Residence Hall on Wellesley College's campus.
Please also advise us of any special medical or dietary requirements you may have. Convention registration will be in the lobby of Tower Court Residence Hall. An elevator is available to reach the rooms above.

RATES

Room and board will be \$20.00 per day, per person. There is no price break on double rooms. Double rooms are scarce as well, so book early. There is no charge for babies in arms. No cribs are available at the College.

REGISTRATION FEE

Registration fee is \$15.00 per person for those 18 years old or older until June 1st. After June 1st the fee is \$25.00. This fee helps cover cost of receptions, meeting rooms, and other activities. Convention's night at the Boston Pops Symphony is on Saturday, June 28th. Ticket reservations must be made at the time you send your advanced registration. The Boston Pops is a unique tradition among Bostonians and has a new conductor, John Williams, who replaces the late Arthur Fiedler. Tickets cost \$9.50. Please add this amount to your registration if you wish to attend. Tickets are available only on advanced sale basis. No tickets will be available after June 1st. Transportation by chartered bus to Symphony Hall from Wellesley College and return will be provided. Make registration and Boston Pops ticket checks payable to: "The Swedenborgian Church."

AUTO PARKING

Ample parking space has been made available near Tower Court Residence Hall for Convention cars. Lots are patrolled by campus police. Travel trailers cannot be accommodated unfortunately. No camping is permitted on the College grounds.

DIRECTIONS TO WELLESLEY COLLEGE

At the time we acknowledge reservations we will include travel information from airport, train and bus in Boston to the Wellesley College campus.

Send this registration form with your deposit and Boston Pops ticket request and payment to:
The General Convention Central Office, 48 Sargent Street, Newton, Mass. 02158

1980 Convention Children's Program

Hey kids, Convention is for you too!!! If you've never been to one, it's a time when members of our church get together for meetings and other stuff. Adults have usually thought of it as being just for them, but just like last year we are going to show them that we can get together and learn a lot of neat things, see a lot of interesting places, and do other fun things.

If you are four or younger, Wellesley has this really neat playground and there will be adults with you every day from 9 till 9 who know games to play and stories to tell. If you are five or older, we'll also be getting together every day from Wednesday evening through Sunday morning. We'll have time for crafts, songs, talking with ministers, games, acting in a play, and seeing the New England Aquarium and the Children's Science Museum. Don't worry about not seeing your parents enough. Every day they will come and get you for lunch and dinner, and every night after we've had our party they'll take you back to your room.

If your parents are coming to Convention, ask them if you can come along. If they say yes, then pack your bags and I'll see you in Wellesley, Massachusetts.

Ron Brugler

All adult members please note: Last year twenty seven adults worked in the children's program, most for only one or two hours per day. If you are willing to spend some time helping with this important project, please get in touch with me soon at 225 Beau's Drive, Portersville, PA 16051. If possible, tell me what you can do; if you don't know, we always need someone to just help out. Thanks!

BOARD OF EDUCATION SPONSORS LEAGUERS

At the fall meeting of the BOE held in Fryeburg, Maine the board voted to continue its sponsorship of one leaguer from each Association for room and board at the 1980 convention, held on the campus of Wellesley College, June 25 — 29. Our theme this year is "The New Church in the New Decade." A full and interesting ANCL program is being planned.

The board recommends, when possible, that different leaguers from each Association be chosen each year and that emphasis be placed on choosing younger leaguers.

Due partly to board sponsorship, the number of leaguers attending the 1979 convention was the largest in some time. We would like to have a league representative from every Association this year.

CAMP BLAIRHAVEN

Camp Blairhaven, located on the shores of Duxbury Bay, adjacent to Miles Standish Park provides an opportunity to enjoy fellowship, recreation, and spiritual growth. It's first session of the season runs from Sunday, June 29 to Saturday, July 12 for children ages 8 to 10 yrs. and the second session from Sunday, July 26 for children ages 11 thru 13.

A typical day begins with flag raising, breakfast, an outdoor Chapel service and a morning program. Lunch, followed by a rest period, then a varied afternoon program is enjoyed. Religious education, sports, swimming and arts and crafts are a part of each day's schedule. The evening meal, a game and vespers close a busy and rewarding day.

The "Barn" with its rustic atmosphere, yet with all the modern conveniences, houses the male campers and staff on the second floor, while the first floor is used for rainy day activities, such as gymnastics and ping - pong. The kitchen and dining area are so situated as to create a family style atmosphere. Accomodations for female campers and staff are located in the second floor bedrooms.

The day's activities are planned around swimming at high tide, which is supervised by a certified Red Cross Lifesaver. Hikes, such as to Miles Standish Monument, nature walks, scavenger hunts, taffy pulls, are included in the activities, as well as volleyball, badminton, archery, basketball, touch football, tether ball, soft ball, Capture the Flag, and the Blairhaven Olympics.

A quiet discussion of the day's Bible lesson amidst the tall cedars, has instilled in many campers a lasting love and understanding of God's Universe.

The capacity of the camp is limited to 16 girls and 16 boys so it is important that parents wishing to send their children to apply as soon as possible. The camp fee is \$50.00 per week, plus an outing and educational fee of \$15.00 and a registration fee (non - refundable) of

\$5.00. For information and applications write to Camp Blairhaven, c/o Massachusetts New Church Union, 79 Newbury St., Boston, MA. 02116.

This year the State of Massachusetts requires that all campers as well as staff counselors have a rigid physical examination before being accepted at camp.

Anyone seeking to be a counselor who is of college age and has had at least a year of

experience as a camp counselor should apply as soon as possible stating his or her qualifications. Those who meet the requirements above who in addition hold a Red Cross Water Safety certificate will be given first consideration.

Attention New Church families! The Camp facilities for the months of August and September are available on a weekly basis. For cost and other details write at once to the address stated above.

1980 CONVENTION STATISTICS

Association	Societies	Ministers		Membership		Total
		Ord.	Lay	Act.	Inact.	
Canada	1	1		115	40	155
Connecticut				7		7
Illinois	5	3	1	173	25	198
Kansas	3	2		180		180
Maine	3	1	1	209	97	306
Massachusetts	7	6		267	182	449
Michigan	1	1		48	19	67
Middle Atlantic	4	3	1	196	135	331
New York	2	1	1	76	39	115
Ohio	5	3		115		115
Pacific Coast	7	7		270	70	340
Southeast	2	2		115	23	138
Western Canada Conf.	7	1	4	183		183
Gulfport Society	1			11	13	24
Totals	48	31	8	1965	643	2608

NEW CHURCH CENTENNIAL IN AUSTRALIA

The New Church Societies in Australia are hosting a Centennial celebration next January to which New Church members around the world are invited.

TIME: January 5th to January 14th, 1981.

PLACE: Merricks, about 40 miles southeast of Melbourne, Victoria.

PROGRAM: Lectures and discussions on vital New Church issues in the morning, the afternoons are free for local trips, swimming, etc.

COST: \$105 (U.S.); \$125 (Can.)

For further information write to: Mrs. P. Bosley, 3931 Sacramento St., San Francisco, Cal. 94118; or to: Mr. Neville Jarvis, 1 Eve Court, Ringwood, Victoria, 3134, Australia.

CRAFT EXHIBIT AT CONVENTION

Convention goers are urged to bring their hand - made crafts and art - work to exhibit and/or sell at the 1980 Convention. An opportunity for the many talented people in Convention to display their wares . . . another way to witness to the "New Church in the New Decade." Paintings, ceramics, wood carving, leather work, sewing and knitting finery — we would like to see all types of handwork at this year's exhibit.

Those planning to display hand crafts at Convention '80 should contact:

Mr. Roger Paulson
48 Sargent St.
Newton, Mass. 02158

THE MESSENGER
Box 2642, Stn. B
Kitchener, Ont. N2H 6N2

RETURN POSTAGE
GUARANTEED



THIS IS THE THIRD AND FINAL NOTICE.

If you would like to continue receiving the Messenger after June, 1980, please send your name and address to:

MESSENGER MAILING
BOX 2642, Stn. B
KITCHENER, ONT. N2H 6N2

Convention ministers and spouses, members of all Convention Boards and Committees, and people who have sent financial contributions to the *Messenger* over the past twelve months may disregard this notice.

We appreciate your co -
operation in updating the
Messenger mailing list.